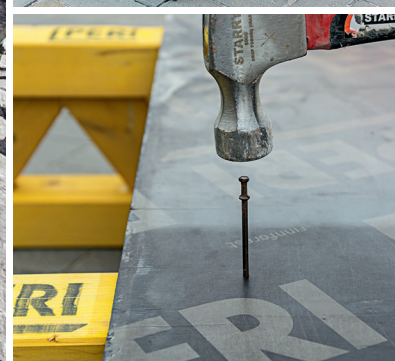


Zero Damage

Correctly using PERI formwork and scaffolding materials



Zero Damage

Correct use of PERI materials

If formwork and scaffolding materials are returned from the construction site in poor condition, this means we have to clean, repair, or even dispose of the materials. You will be invoiced, of course, for the labour and material costs incurred. Through this we ensure that every rental customer can work safely and efficiently with the PERI systems.

We guarantee the high standard of quality required in our PERI rental parks. Support us as much as possible by using PERI formwork and scaffolding equipment correctly. This means you will also save your hard-earned money!

If you take the following into consideration, you can

- reduce cleaning and repair costs incurred for damaged materials,
- reduce the amount of lost materials,
- increase loading capacity and save on freight costs,
- reduce safety risks,
- increase the efficiency and productivity on the jobsite,
- shorten the negotiation period during the completion of a construction project as well as
- improving relationships with business partners.

This brochure provides practical and important information about the appropriate use of PERI materials and equipment. Through the use of easy to understand examples that are applicable for the range of systems, we show you how to avoid damaging PERI materials. If you have any further questions, please contact PERI at any time.

Participate in the success of Zero Damage. And reduce your costs at the same time!

The following illustrations show:



Correct use of PERI materials



Incorrect use of PERI materials



Result of incorrect use



With our "Zero Damage" campaign, we would like to highlight the advantages resulting from the correct use of PERI materials. This brochure is part of the campaign.



Zero Damage
Quality Maintenance

Mounting the formlining



Always use nails of the appropriate size, and hammer in nails straight



Do not use nails that are too long, and do not hammer in at an angle



Result: large spalling of the girder = high costs incurred for damage repair or replacement



Standard length of the girder



Only use girders of standard lengths



Do not shorten the girder depending on needs



Result: girders with any shortened length = high costs incurred for replacement



Striking of props



Always lower the prop before striking, and remove only after releasing the nut



Do not hit the prop with the hammer, or let the prop fall to the ground



Result: props with dents and kinks = high costs incurred for damage repair or replacement



Zero Damage

Correct use of PERI materials

Protecting the formlining



Before shuttering, apply PERI Clean to the formlining before each use



Never work without PERI Clean



Result: heavily soiled formlining
= high costs incurred for replacement



Moving



Only move panel formwork using the appropriate lifting gear and hooks



Do not lift the panel formwork unevenly or without hooks



Result: damaged corners and frames
caused by dropping
= high costs incurred for replacement



Striking



Carefully remove the panel formwork after the concrete has hardened using suitable equipment



Do not strike panel formwork by means of a tie rod or other objects



Result: damaged frames
= high costs incurred for replacement



Closing of couplers



Always close the couplers using exact number of blows with a carpenter's hammer



Do not close the couplers using a sledge hammer or multiple blows of the hammer



Result: damaged couplers = high costs incurred for damage repair or replacement



Assembly of stacking towers



Always insert frames on top of each other by hand



Do not use a hammer to carry out assembly



Result: damaged materials = high costs incurred for damage repair or replacement



Use of crate pallets and pallets



Only store small components in crane pallets



Do not use crate pallets as a work surface or for storing waste



Result: damaged crate pallets = high costs incurred for damage repair or replacement



Zero Damage

Correct use of PERI materials

Storage of panel formwork



Always store the panel formwork with the formlining facing upwards and use timber supports



Do not lay the formlining directly on the ground



Result: damaged formlining = high costs for replacement



Storage of components



Always carefully handle all accessories, and store and transport in crate pallets



Do not throw materials or allow them to fall to the ground from great heights



Result: damaged materials = high costs incurred for damage repair or replacement



Cleaning the scaffold materials prior to return delivery



Clean the scaffold materials with a scraper before returning them



Do not return any scaffold materials that have not been cleaned beforehand



Result: dirty materials = high cleaning costs



Cleaning the panel formwork after concreting



Remove excess concrete immediately after concreting by means of a high-pressure cleaner



Do not allow any excess concrete to harden on the formwork



Result: very dirty materials = high cleaning costs



Cleaning the girders prior to return delivery



Clean the girders with a scraper before returning them



Do not return any girders that have not been cleaned beforehand



Result: dirty girders = high cleaning costs



Cleaning the frames prior to return delivery



Carefully clean the inside and outside of the frames before return delivery takes place



Do not return any frames that have not been cleaned beforehand



Result: dirty frames = high cleaning costs



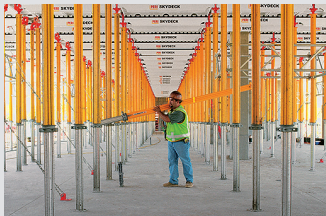
The optimal System for every Project and every Requirement



Wall Formwork



Column Formwork



Slab Formwork



Climbing Systems



Tunnel Formwork



Bridge Formwork



Shoring Systems



Construction Scaffold



Facade Scaffold



Industrial Scaffold



Access



Protection Scaffold



System-Independent Accessories



Services



PERI GmbH
Formwork Scaffolding Engineering
 Rudolf-Diesel-Strasse 19
 89264 Weissenhorn
 Germany
 Tel. +49 (0)7309.950-0
 Fax +49 (0)7309.951-0
 info@peri.com
 www.peri.com